

Easy-Sync USB – Serial Port Adapter Setup

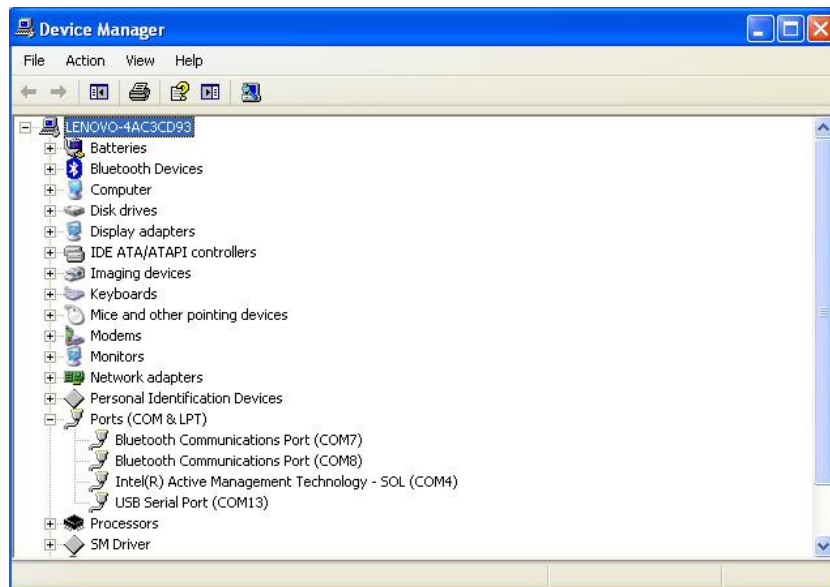
First install the small driver CD that is included with the adapter. When using a USB-serial adapter you need to select the correct comms port when the PC software is first started. Different adapters can assign themselves as different virtual comms ports but there is an easy trick to determine which port relates to the USB-serial adapter. Follow the setup instructions below:

- Start the Emerald PC software without the USB-serial adapter connected to the PC.
- From the comms port selection drop down list note the comms ports that are listed. Even if the PC doesn't have a comms port you can connect to, you may still have ports listed - these may be allocated to an internal modem or mouse/trackpad rather than a physical comms port.
- Select 'cancel' and close the Emerald PC software.
- Now insert the USB-serial adapter, let it initialise if necessary and then restart the Emerald PC software. Again, note the comms ports listed.
- You should have a new comms port included in the drop down comms port selection list. This new port is the USB-serial adapter.
- Select this port and now connect to the ECU using the Emerald Serial comms lead and power up the ECU.
- The ECU and PC should now communicate as normal.
- Each time the USB-serial adapter is connected it should allocate the same comms port so there should be no need to repeat this process with this particular PC.

A slightly lengthier but ultimately definitive way to determine which comms port is associated with the USB-serial adapter is by using Windows Device manager. On the majority of Windows based PC's you can access Device manager via the following route:

- Start>Control panel>System>Hardware>Device manager.

The window that appears should look something similar to below:



Click on the Ports icon to reveal all currently in use ports on your PC. With the USB-serial adapter connected it should appear in the list. In the above example the Port identified is Com13. Select that port when opening the Emerald software.



If you do encounter problems with connecting to the ECU, such as error messages stating “device already open” or the cursor continually moving where you have no control over it, please try the following.

- Disconnect both the Emerald comms lead and the USB - Serial Adapter from the PC.
- Reboot the PC
- Proceed with the USB – Serial Port Adapter Setup instructions again.

If you are using the “Easysync” USB- serial Adapter it should also be noted that some newer PCs (operating Windows Vista or Windows 7) may need to upgrade their drivers via the FTDI Chip website. <http://www.ftdichip.com/Drivers/VCP.htm>

Look for the Windows operating software in the “Currently Supported VCP Drivers” table, approximately half way down the page.