

2 + 1 Way Map Switch

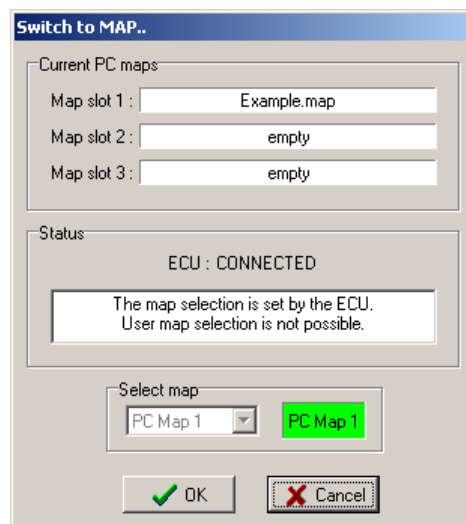
(2 Position Rotary plus 1 Position Button/ Switch)

Map switching and map slots

The *.map files have 3 slots. Each slot can contain a completely different map. The steps below show how to populate all three slots with the same map.

Step1.

- Read the current map from the ECU or from a file on disk.
If the map has been read from the ECU you should now save it to disk.
- By clicking **PC Map 1** on the status bar, selecting **Switch to MAP...** from the **File** menu, or pressing the Alt+M shortcut keys you can view the map slot selection/status window as shown below:

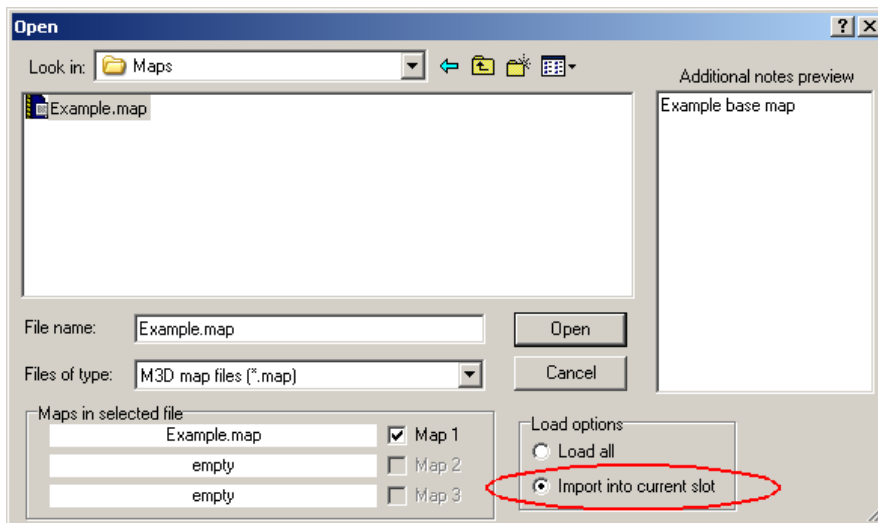


Step 2

- Select the MAP2 slot.
If the ECU is connected you can only select the MAP2 slot by moving your dash map switch to position 2.
If the ECU is not connected then just click **PC Map 1**, to bring up the map selection window, select **PC map 2** then click the OK button.
You may find it faster/easier to use the keyboard instead of a mouse or trackpad. The key sequence for the steps above are:
 - Press Alt+M to bring up the map selection window
 - Press the DOWN ARROW to move to **PC Map 2**
 - Press the ENTER key to finalise the selection.

Step 3

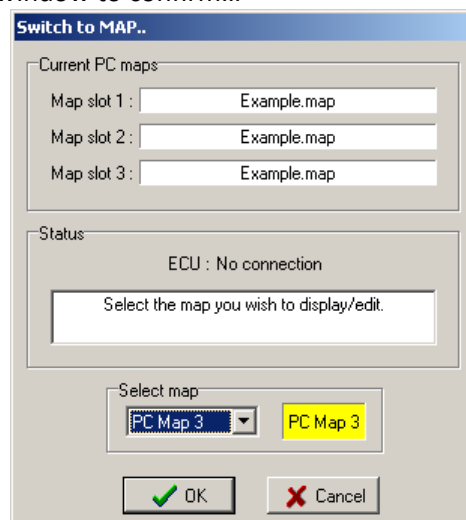
- Load the “Example.map” file from disk.
The open file window will show the map slot status for any map file that you highlight. In this example we are selecting the previously saved Example.map so, as shown below, only slot 1 is populated.
- Because we want to load the Example.map into the Map2 slot the **Load options** box should be set to **Import into current slot**. Any map from any of the 3 slot positions can be loaded. In this case the file only has slot 1 populated so empty slot 2 and empty slot 3 cannot be selected.



- Press the ENTER key or click the **Open** button to load Example.map into Map2.

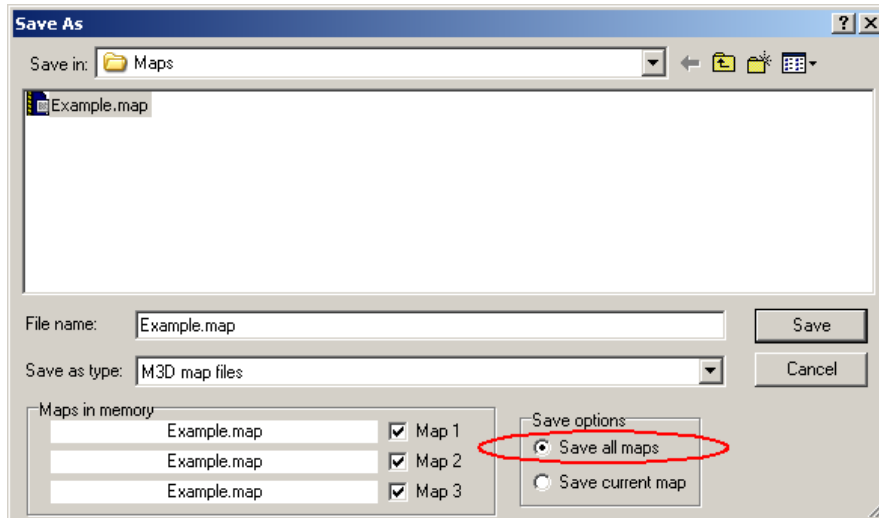
Step 4

- Repeat step 2 but select MAP3 this time.
- Repeat step 3
- At this point you will have loaded Example.map into each of the 3 map slots. Bring up the map selection/status window to confirm...

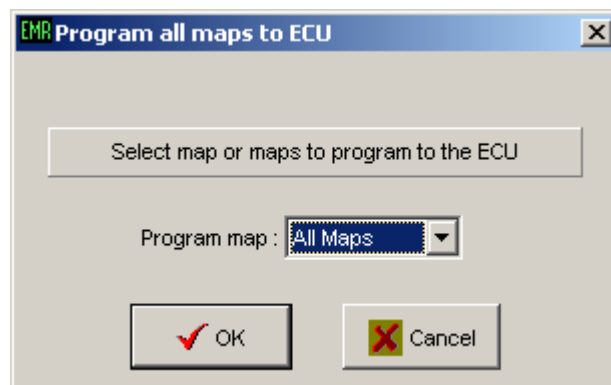


Step 5

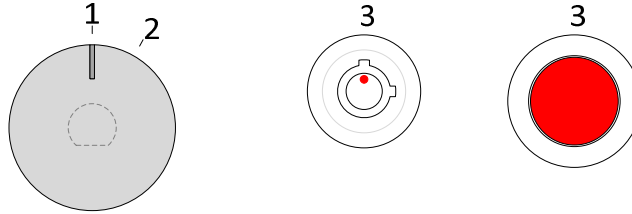
- Save your new map to disk. Ensure that **Save options** is set to **all maps** so that all 3 slots are saved together.



- To program the ECU with all three maps select **Program ECU** from the **Comms** menu then set the **Program map** option to **All Maps**.

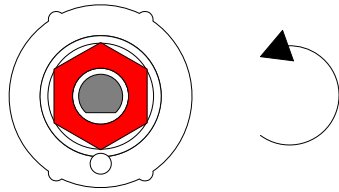
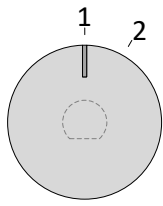


Map Switch Positions

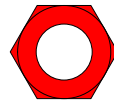
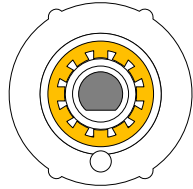


Position (Map)	Map	NOTES
1		
2		
3		

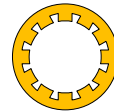
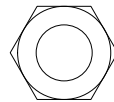
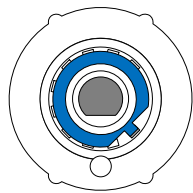
Key/ button switch position 3 overrides rotary switch.



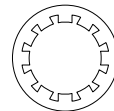
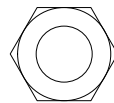
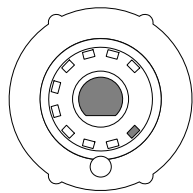
Rotate shaft full anti-clockwise



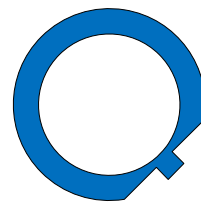
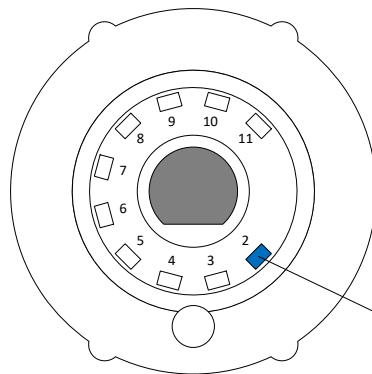
Nut



Locking Washer

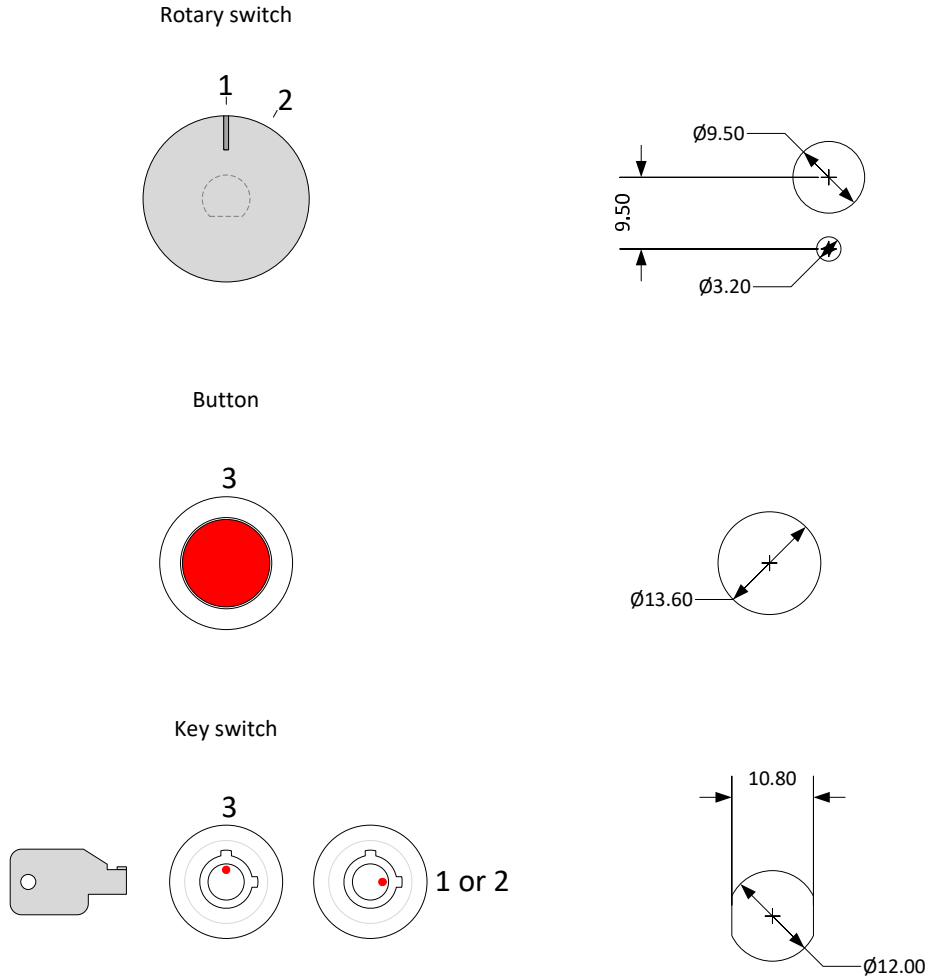


Tab Washer



Position the
tab washer
into socket '2'

Panel Cut-out



Note

The rotary switch is fitted from the rear of the panel, whereas the button/ key switch is fitted from the front of the panel. It is easiest to cut the two red wires of the button/ key switch in a convenient position and re-join when in position. (They are not polarity sensitive so can be connected either way.)

