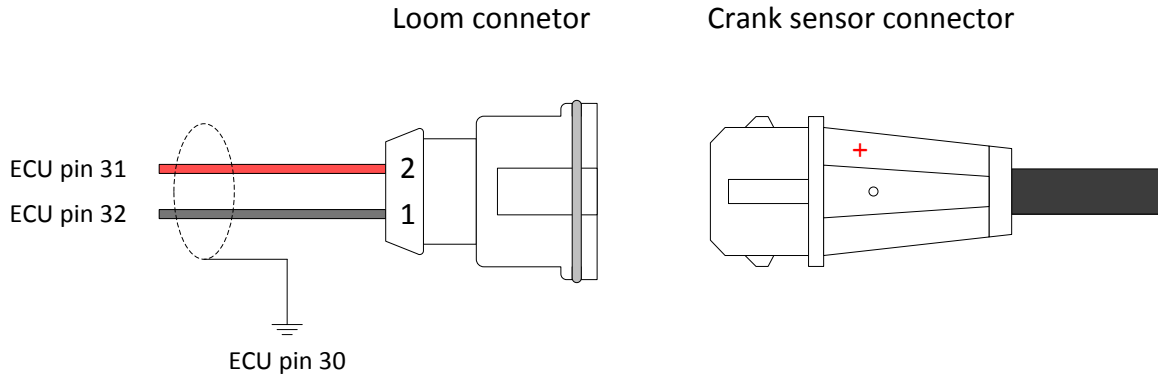


Inductive Crank Sensor



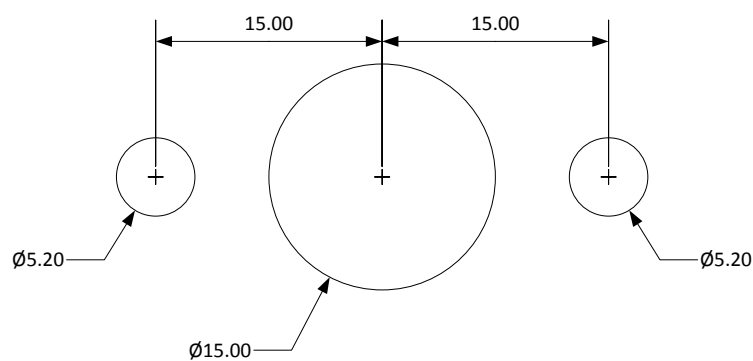
Sensor pin 1 = Signal ground, connect to ECU pin 32

Sensor pin 2 = Signal +, connect to ECU pin 31 (marked '+' on the white plastic connector)

Shielded cable is necessary between the ECU and crank sensor plug. The cable shield is to be connected to the sensor ground (ECU pin 30) at the ECU end only.

Sensor/ trigger wheel gap = 0.8mm – 1.0mm

Sensor Dimensions (mm)



Emerald M3D Ltd, Unit 6 Norwich Road Industrial Estate, WATTON, Norfolk IP25 6DR, UK

Email: sales@emeraldm3d.co.uk - Website: www.emeraldm3d.com

Company Registered in England and Wales No.5084610

Tel: +44(0)1953 889110 Fax: +44(0)1953 889004

VAT Reg No: GB 839 3626 95